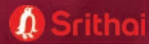




# CONTAINER CRATE



+ (66) 2 427 0088 | [pallet1@srithaisuperware.com](mailto:pallet1@srithaisuperware.com) | [Srithaisuperware.com](http://Srithaisuperware.com)



## Containers



**Plastic containers** protect product during picking, assembly, processing, storage and distribution applications in a wide variety of industries, including food, pharmaceutical, poultry, automotive, appliance, aerospace, bakery, produce, apparel, electronics and other products. These are available in several styles to add superior space savings for efficient storage and distribution.





**SN 22**

Ex. 350x430x150 mm.

In. 327x406x140 mm.



## Containers

**SN 23**

Ex. 350x430x273 mm.

In. 327x406x268 mm.





## Containers





### CBL 115

Ex.400x600x115 mm.

In.380x570x100 mm.



### CBL 230

Ex.400x600x230 mm.

In.380x570x215 mm.

## Containers

### Half CBL 115

Ex.295x395x115 mm.

In.260x360x100 mm.



### Half CBL 230

Ex.295x395x230 mm.

In.260x360x215 mm.





## Containers





### Half CBL 100

Ex.295x395x100 mm.

In.260x360x80 mm.



### Half CBL 190

Ex.295x395x190 mm.

In.260x360x175 mm.

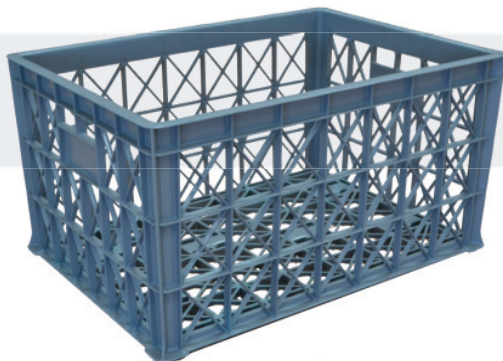


## Containers

### IC 231

Ex.555x775x405 mm.

In.510x730x370 mm.



### IC 234

Ex.435x620x195 mm.

In.395x580x180 mm.

### IC 233

Ex.360x500x310 mm.

In.330x470x295 mm.





**IC 101**

Ex. 147x242x123 mm.

In. 111x202x120 mm.



**IC 102**

Ex. 242x295x122 mm.

In. 206x254x120 mm.



**IC 114**

Ex. 295x485x250 mm.

In. 270x445x240 mm.



**IC 135**

Ex. 300x470x180 mm.

In. 265x420x170 mm.





**IC 103**

Ex. 430x570x250 mm.

In. 395x525x245 mm.



**LC 103**

Size : 443x578 mm.

## IC BOX



**IC 149**

Ex. 430x570x140 mm.

In. 395x525x130 mm.

**IC 115**

Ex. 490x585x370 mm.


In. 445x560x365 mm.



 **Superware**



## Foldable Containers

 **Foldable Containers** a new perspective on reducing container-repositioning costs. There is little doubt that the requirement to reposition empty containers is one of the more persistent problems in the container transport industry, and is a key factor in cutting operating costs.

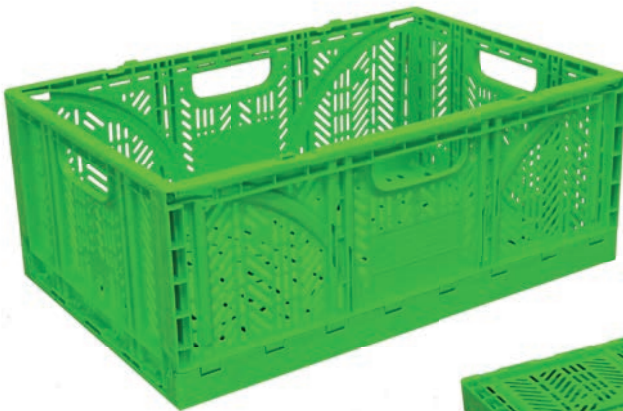




### T-35

Ex.400x600x170 mm.

In.370x570x160 mm.



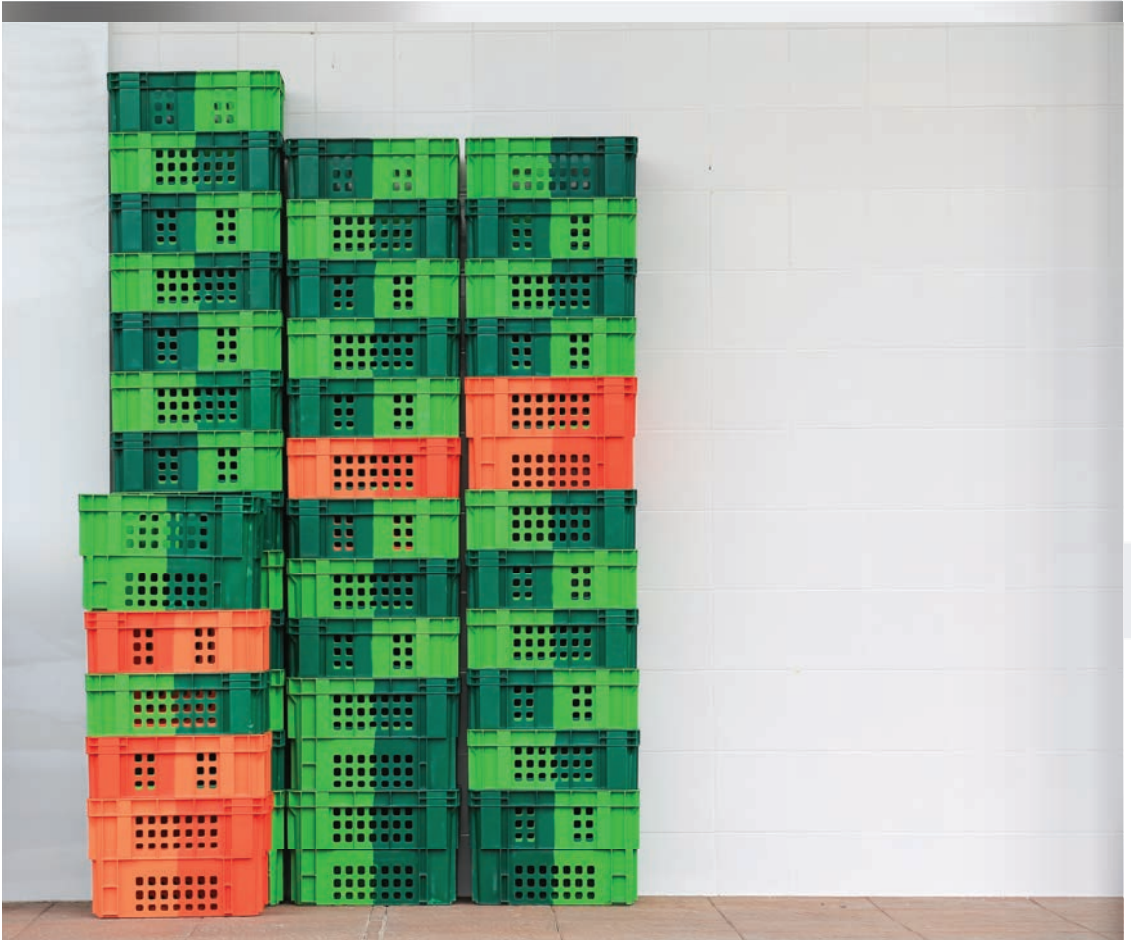
### T-47

Ex.400x600x230 mm.

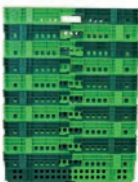
In.370x570x220 mm.



 Superware



## Nesting Containers



- Space-Saving when nested-stack
- Return-trip Transport cost savings
- Less Warehousing space requirements



- Enable Visual Control
- Ease of Handling



**H SN 23**  
 Ex. 430x350x160 mm.  
 In. 360x285x145 mm.



**SN 23**  
 Ex. 430X350X282 mm.  
 In. 360X285X260 mm.



**SN 22**  
 Ex. 430X700X160 mm.  
 In. 375X645X145 mm.

## Nesting Containers



**SN 165**  
 Ex. 400x480x165 mm.  
 In. 340x420x150 mm.



**SN 315**  
 Ex. 400x480x315 mm.  
 In. 340x420x300 mm.

**SN CBL 115**  
 Ex. 400x600x115 mm.  
 In. 360x560x100 mm.



**SN CBL 230**  
 Ex. 400x600x230 mm.  
 In. 380x570x215 mm.



## Nesting Containers





Dolly  
Size. 457x745x155 mm.



## Nesting Containers



Dolly  
Size. 457x745x155 mm.





## Break Case (Totes Boxes)



**Storage totes** come in just about industrial containers are made for tough shipping conditions and protect your products.



All Totes can stack together to conserve space when empty. It is ideal for save valuable space. The totes stack securely and can be labeled for easy identification of the contents. Consolidates is the best for logistics functions



**Break Case**

Ex.405x610x367 mm.  
In.375x565x335 mm.

**Break Case Jr**

Ex.385x550x318 mm.  
In.360x502x286 mm.

**Break Case S**

Ex.405x610x367 mm.  
In.375x565x335 mm.



**Break Case (Totes Boxes)**



**H Break Case**

Ex.405x610x250 mm.  
In.375x565x218 mm.



| Security Pin





## Crates



Remark: Size and design depend on customer request



## Crates







### Bakery Tray Type 1

Ex.640x540x140 mm.

In.605x510x120 mm.

## Bakery Crates



### Bakery Tray Type 2

Ex.580x550x137 mm.

In.530x500x127 mm.

## Seafood Containers



### No.740 C

Ex.540x360x148 mm.

In.451x335x140 mm.



### No.740/3

Ex.660x410x332 mm.

In.555x315x320 mm.



### Seafood Container

Ex.400x600x182 mm.

In.355x545x152 mm.



### No.750

Ex.510x320 mm.

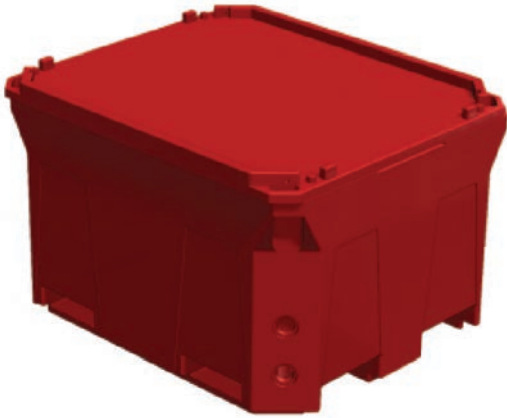
In.430x310 mm.



### No.750/2

Ex.545x360 mm.

In.475x350 mm.

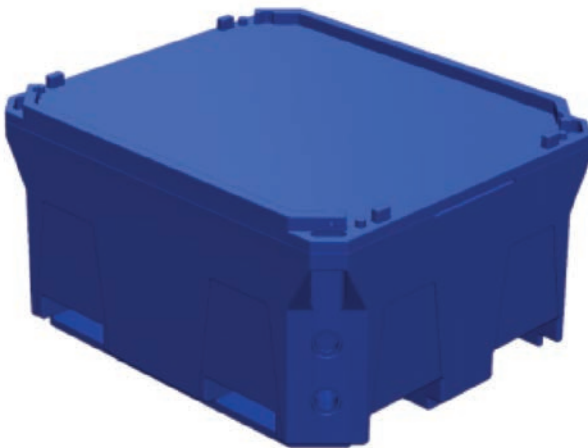


Closed Lid 590 L  
Ex. 1236x1033x775 mm.



Open Lid 620 L  
Ex. 1236x1033x775 mm.

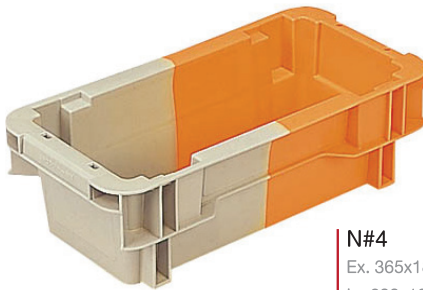
## Cold Storage



Closed Lid 435 L  
Ex. 1236x1033x630 mm.

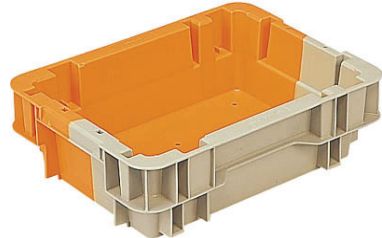


## Automotive Containers



**N#4**

Ex. 365x182x110 mm.  
In. 298x121x94 mm.



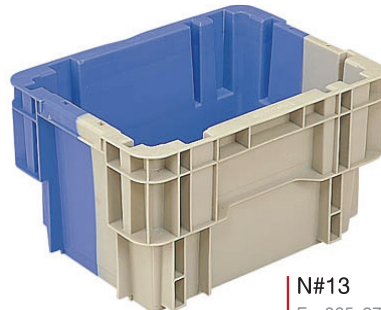
**N#7**

Ex. 365x275x110 mm.  
In. 298x208x93 mm.



**N#10**

Ex. 365x275x160 mm.  
In. 298x208x143 mm.



**N#13**

Ex. 365x275x210 mm.  
In. 298x208x193 mm"

 **Superware**



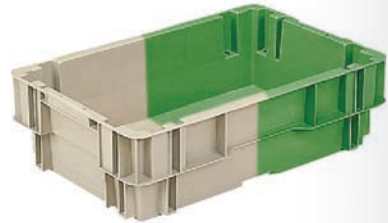
**N#14**  
 Ex. 550x365x110 mm.  
 In. 483x298x84 mm.



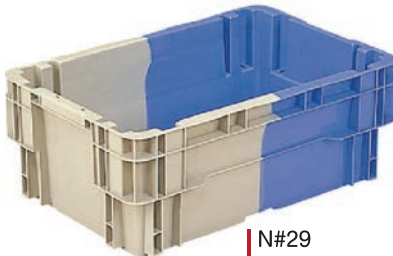
**N#20B**  
 Ex. 442x334x210 mm.  
 In. 374x266x192 mm.



**N#21**  
 Ex. 730x365x110 mm.  
 In. 662x298x92 mm.



**N#22**  
 Ex. 550x365x160 mm.  
 In. 483x298x134 mm.

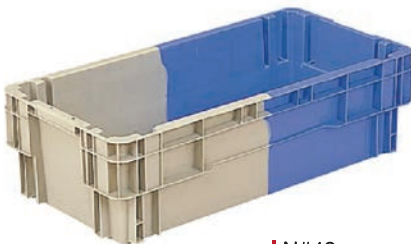


**N#29**  
 Ex. 550x365x210 mm.  
 In. 483x298x184 mm.



**N#30**  
 Ex. 1100x365x110 mm.  
 In. 1024x298x83 mm.

## Automotive Containers

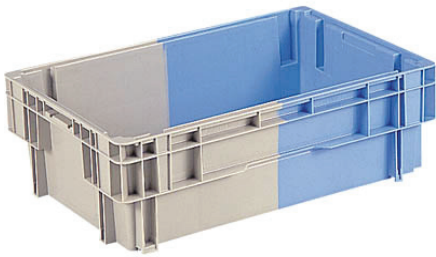


**N#42**  
 Ex. 730x365x210 mm.  
 In. 662x298x192 mm.



**N#44**  
 Ex. 550x363x310 mm.  
 In. 483x298x284 mm.

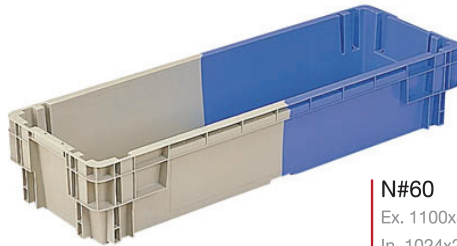




**N#50**

Ex. 668x442x210 mm.

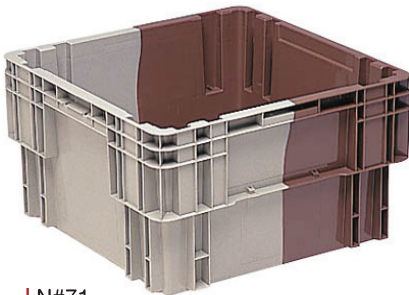
In. 600x374x191 mm.



**N#60**

Ex. 1100x365x210 mm.

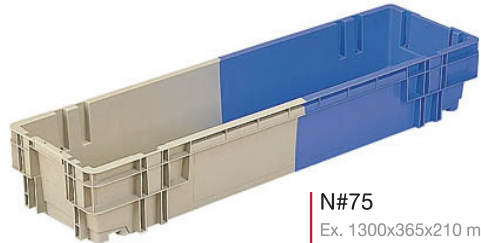
In. 1024x289x183 mm.



**N#71**

Ex. 550x550x310 mm.

In. 474x474x291 mm.



**N#75**

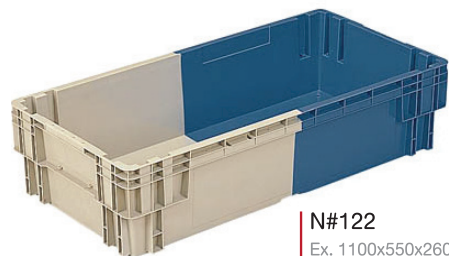
Ex. 1300x365x210 mm.

In. 1224x289x191 mm.

**N#107**

Ex. 550x550x460 mm.

In. 474x474x441 mm.



**N#122**

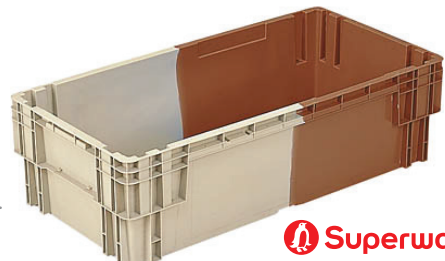
Ex. 1100x550x260 mm.

In. 1024x474x232 mm.

**N#148**

Ex. 1100x550x310 mm.

In. 1024x474x282 mm.



 **Superware**



## Automotive Containers

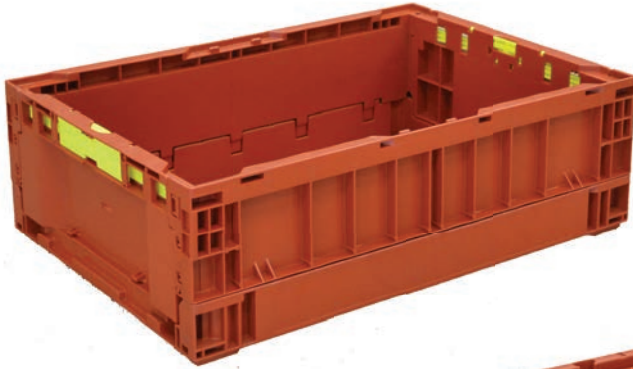


**RC 1**

Ex. 386x560x334 mm.

In. 352x522x324 mm.





### RC 3

Ex. 386x560x171 mm.

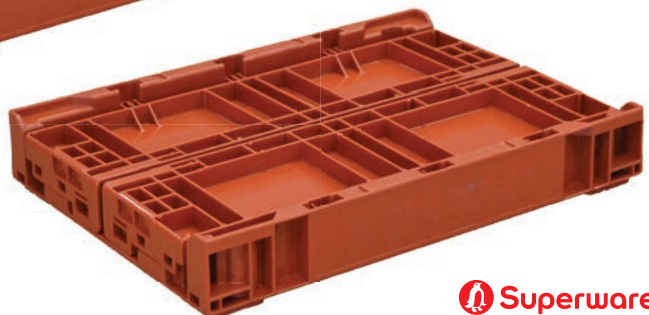
In. 352x520x161 mm.



### RC 4

Ex. 280x386x171 mm.

In. 246x346x161 mm.





## Automotive Containers



**TP 331**  
Ex. 335x335x103 mm.  
In. 290x290x90 mm.



**TP 341**  
Ex. 335x503x103 mm.  
In. 290x458x90 mm.



**TP 332**  
Ex. 335x335x195 mm.  
In. 290x290x182 mm.



**TP 342**  
Ex. 335x503x195 mm.  
In. 290x458x182 mm.



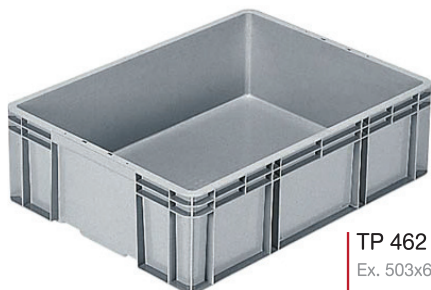
**TP 361**

Ex. 335x670x103 mm.  
In. 290x625x90 mm.



**TP 362**

Ex. 335x670x195 mm.  
In. 290x625x182 mm.



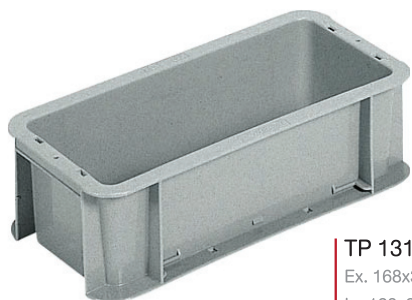
**TP 462**

Ex. 503x670x195 mm.  
In. 458x625x182 mm.



**TP 463**

Ex. 503x670x288 mm.  
In. 458x625x275 mm.



**TP 131**

Ex. 168x335x103 mm.  
In. 123x290x90 mm.



**TP 343**

Ex. 335x503x288 mm.  
In. 290x458x275 mm.



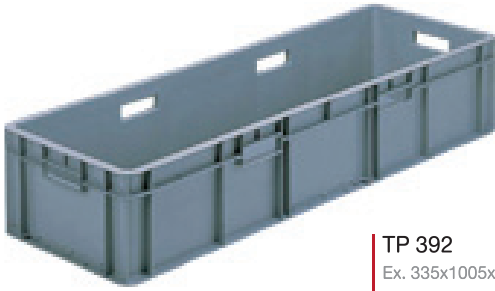
**TP 363**

Ex. 335x670x288 mm.  
In. 290x625x275 mm.



**TP 391**

Ex. 335x1005x103 mm.  
In. 290x960x90 mm.



**TP 392**

Ex. 335x1005x195 mm.  
In. 290x960x182 mm.



**TP 464**

Ex. 503x670x380 mm.  
In. 458x625x367 mm.



**TP 465**

Ex. 503x670x472 mm.  
In. 458x625x459 mm.



**TP 492**

Ex. 503x1005x195 mm.  
In. 458x960x182 mm.



**TP 493**

Ex. 503x1005x288 mm.  
In. 458x960x275 mm.



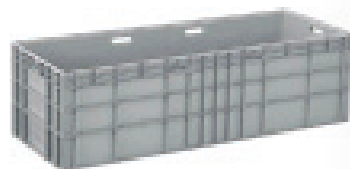
**TP 495**

Ex. 503x1005x472 mm.  
In. 458x960x459 mm.



**TP 4122**

Ex. 503x1340x195 mm.  
In. 448x1285x182 mm.

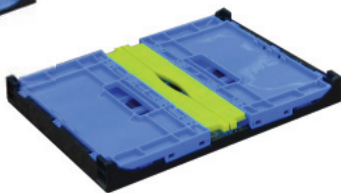


**TP 4124**

Ex. 503x1340x380 mm.  
In. 448x1285x367 mm.



**F BOX 112 F**  
Ex. 275x335x165 mm.  
In. 257x335x159 mm.



**F BOX 122 F**  
Ex. 355x550x165 mm.  
In. 335x530x156 mm.



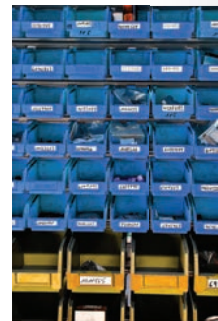
**TP 342 SN**  
Ex. 335x503x195 mm.  
In. 290x458x182 mm.

**TP 342.5 SN**  
Ex. 335x503x240 mm.  
In. 290x458x227 mm.





## Spare Part Boxes

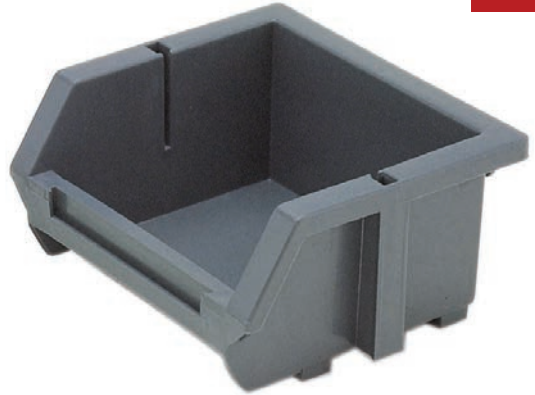






**SB-37**

Ex. 305x470x180 mm.  
In. 280x445x178 mm.



**SB-37**

Ex. 305x470x180 mm.  
In. 280x445x178 mm.



**SB-37**

Ex. 305x470x180 mm.  
In. 280x445x178 mm.

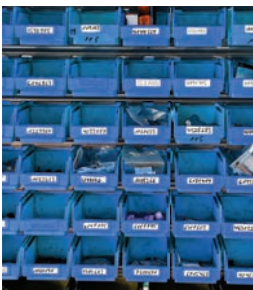


**SB-37**

Ex. 305x470x180 mm.  
In. 280x445x178 mm.



## Spare Part Boxes



**Spare Part Boxes** are Designed to meet the needs of the automotive industry.

These crates are strong and rugged containers for handling components in a wide range of heavy manufacturing and assembly line situations.



All these crates are pallet compatible and special reinforcing columns allow them to be stacked when full - the base is also strengthened to with stand continual conveyor usage.



### SB-37

Ex. 305x470x180 mm.

In. 280x445x178 mm.

### SB-38

Ex. 213x330x153 mm.

In. 190x305x150 mm.



### SB-39

Ex. 150x225x125 mm.

In. 130x212x123 mm.

### SB-40

Ex. 110x165x75 mm.

In. 90x140x70 mm.





“  
**Material Handling  
Equipment  
(Containers  
and Crates  
Total Solutions)**  
”

## CONTAINER CRATE



Srithai Superware Public Company Limited  
15 Suksawat Rd., Soi 36 Bangpakok,  
Rasburana, Bangkok 10140

Srithai Superware Public Company Limited

+ (66) 2 427 0088 | pallet1@srithaisuperware.com | Srithaisuperware.com